



UNIVERSITY  
*of* MOBILE



**Wayne E. Sirmon**

**GEO 301**

**World Regional Geography**



# Geography 301

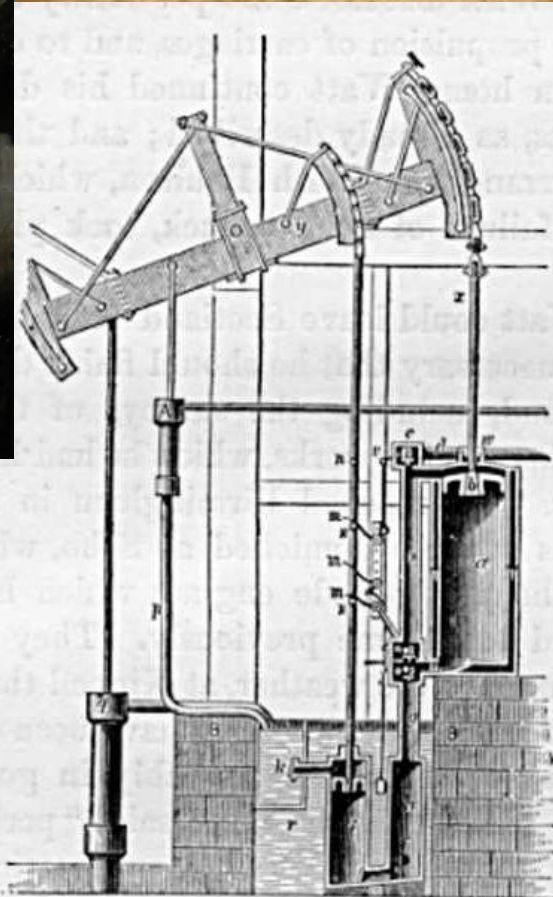
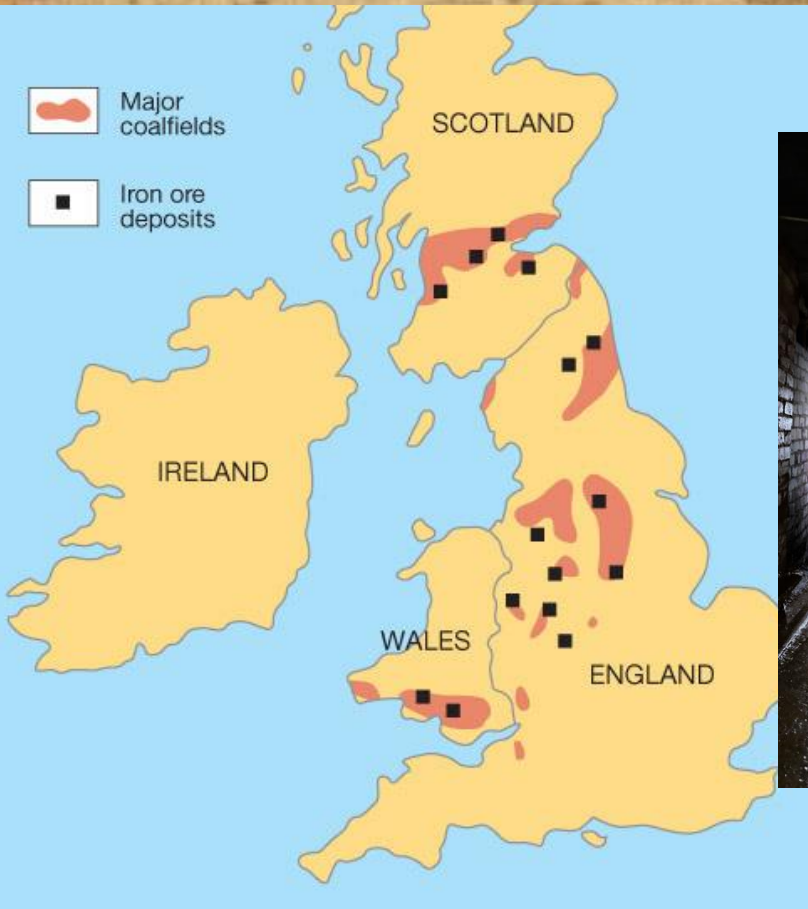








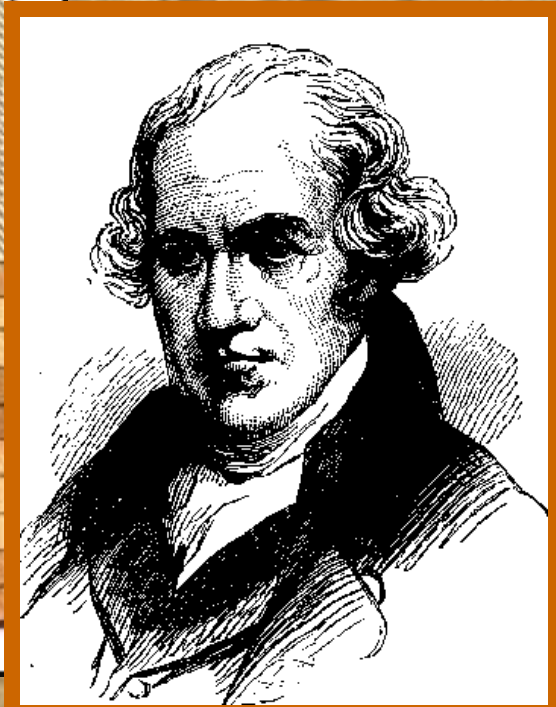
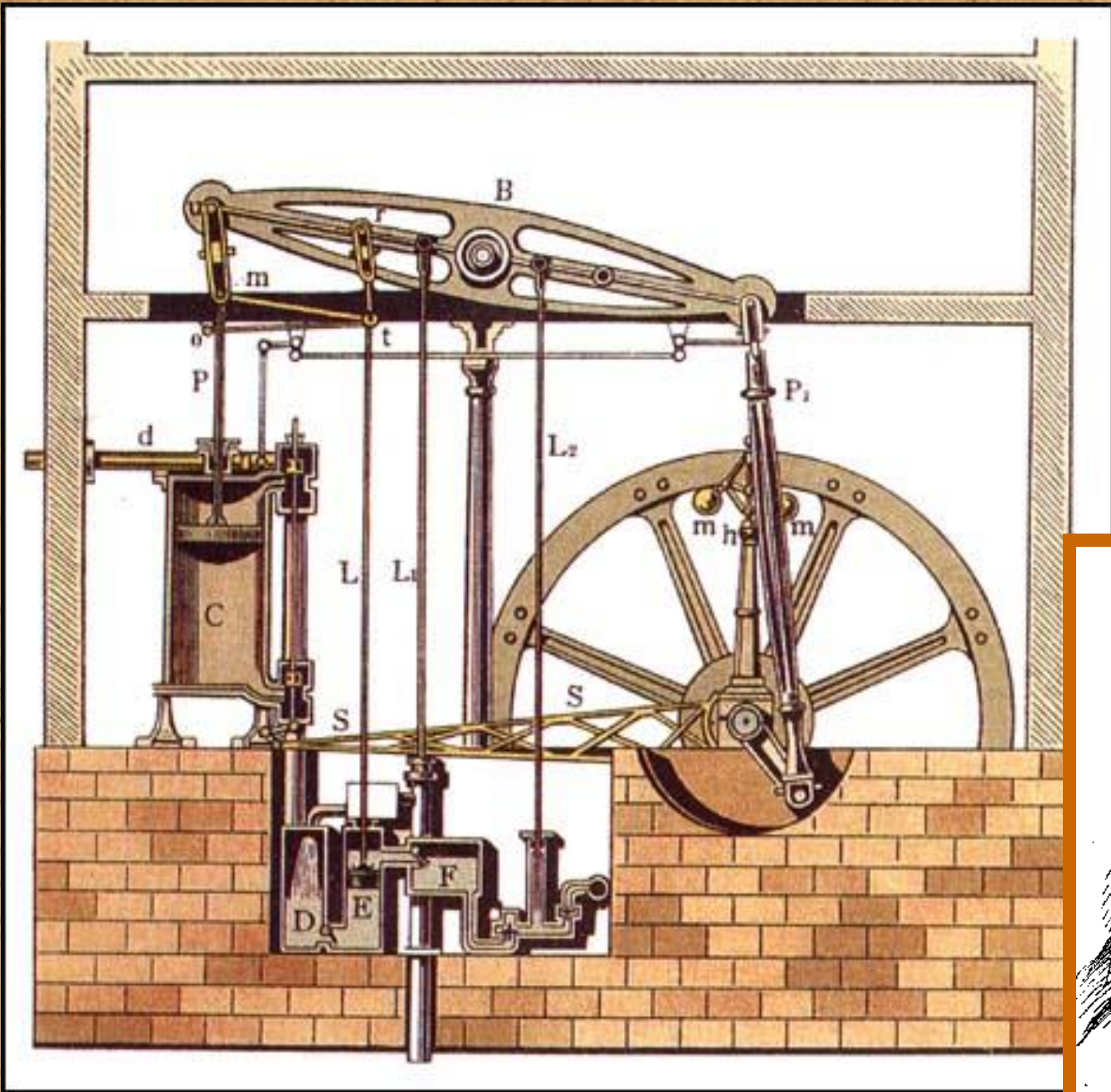
# British Coal and Iron



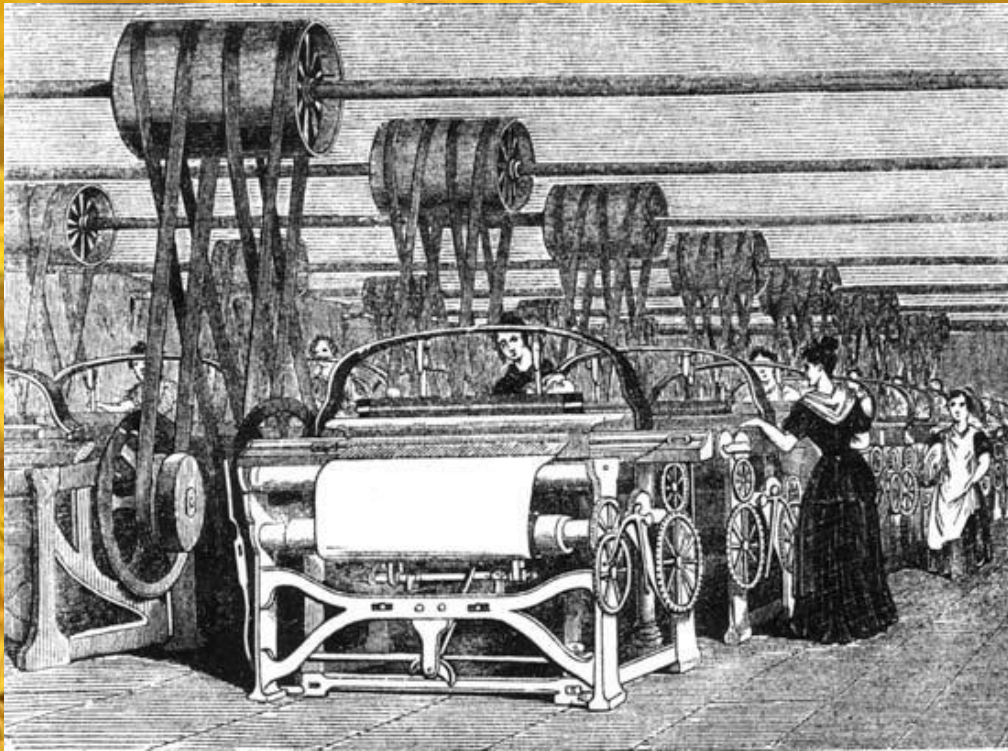
**British turn to coal after forests cut down**  
**Coal veins below water table**  
**Steam driven water pump (Savery – 1698)**  
**James Watt – more efficient engine**

FIG. 26.—Watt's Engine, 1774.









# Cotton Imports to England

(million pounds)

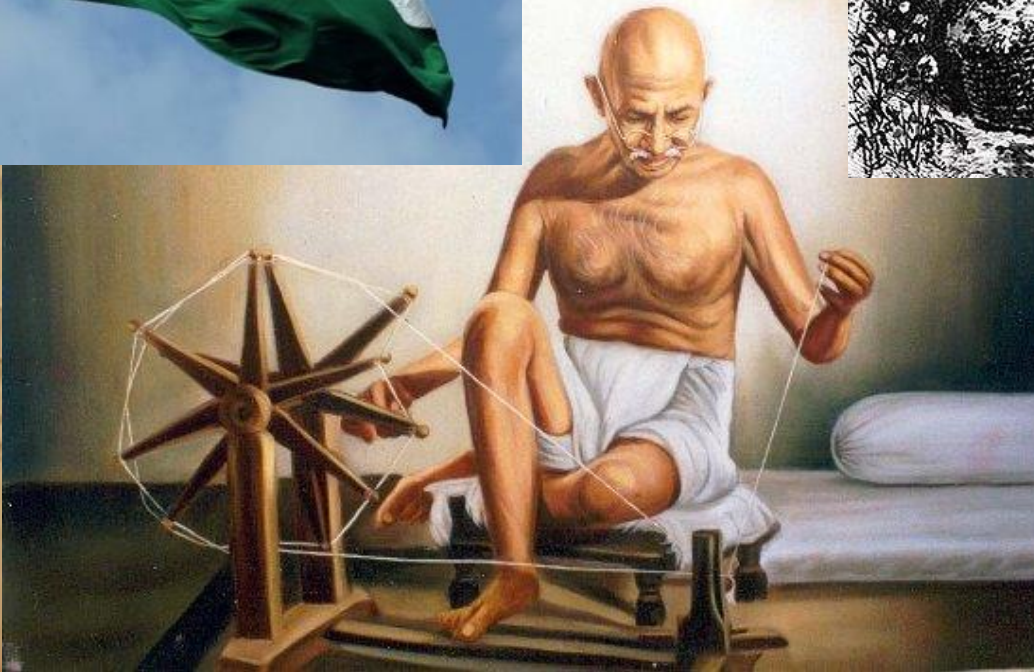
**1781 – 6.0**

**1785 – 18.4**

**1790 – 31.4**



# *Limiting Industrialization to Europe*





# The Irish Famine 1845-1852

1 million deaths

2 million emigrate

English landlords export

30-50 shiploads of food/day.





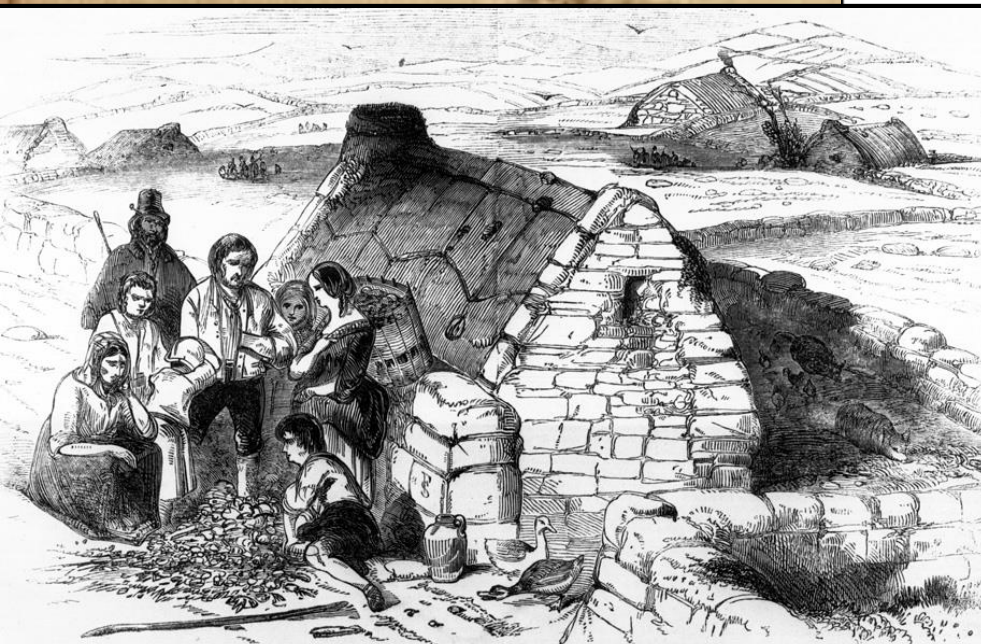
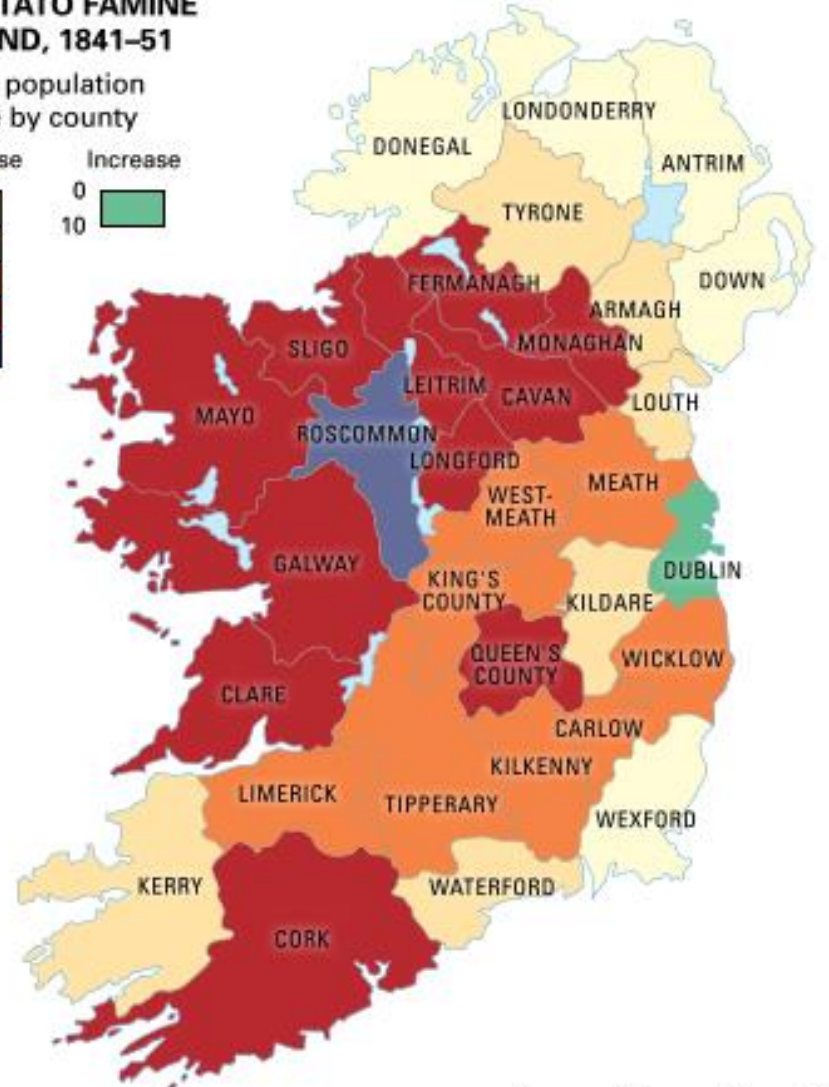
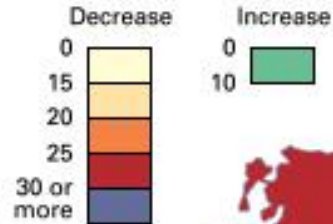
# The Irish Famine

1 million deaths

2 million emigrate

## GREAT POTATO FAMINE IN IRELAND, 1841-51

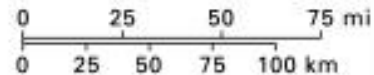
Percent population  
change by county



DESTITUTION IN IRELAND. — FAILURE OF THE POTATO CROP.

*Illustration from the Illustrated Times 22 Aug. 1846.*

edia Britannica, Inc.

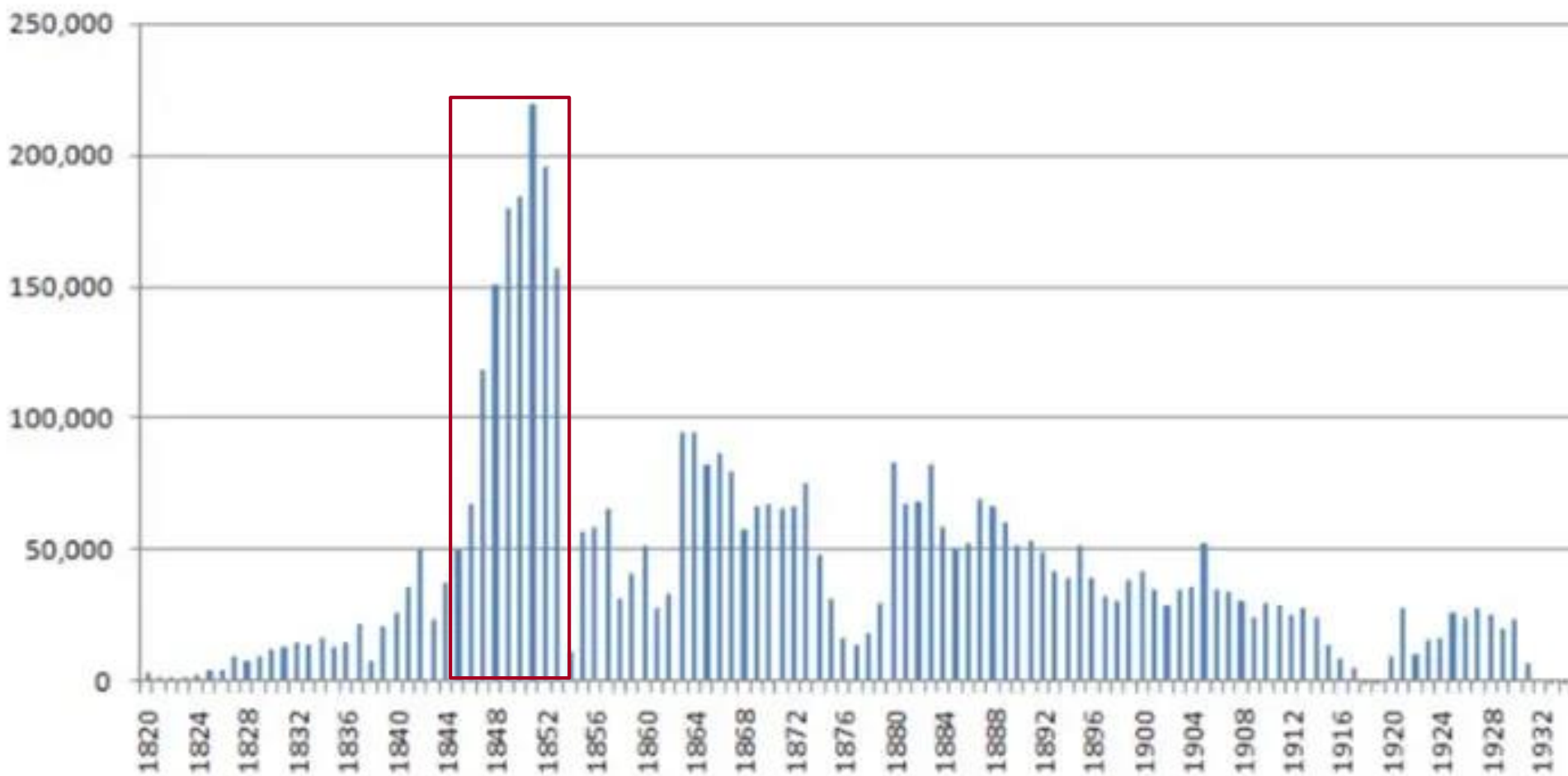




# Irish Immigration to the US

*Between 1820 and 1975, 4.7 million Irish settled in America.*

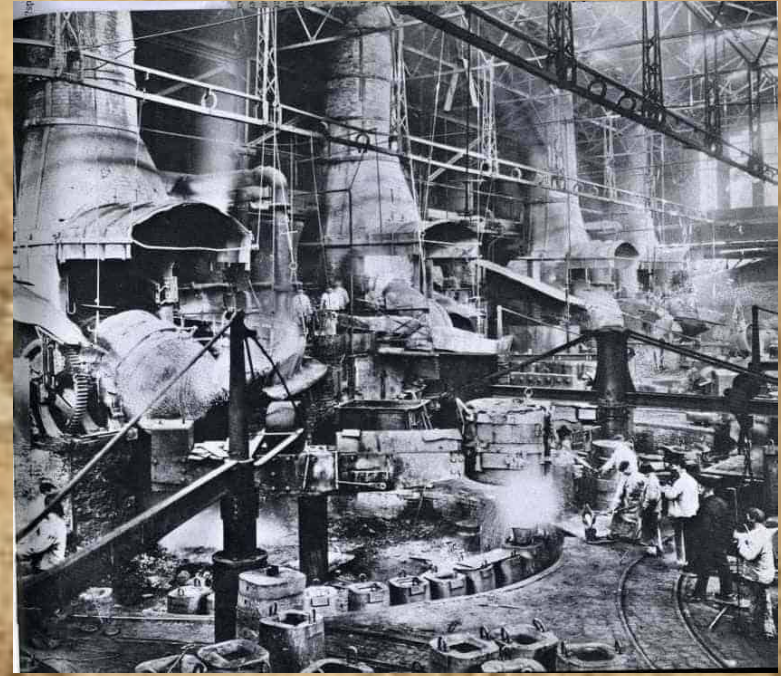
*Between 1845 and 1855 1.5 million Irish arrived in the US.*





# German Engineering *Dominates Europe*

*Passes U.K. in Coal (1912)  
Iron (1902)  
Steel (1892)*



## Power to the People

*Daimler (1886) gasoline  
Diesel (1892) diesel  
Ford (1908) model T*

*1908-27, 15 million built  
(~ 50,000 still road worthy)*



Have Fun  
with a **FORD**  
Pay While You Play

Small Payment Down  
Balance by the Month

INQUIRE INSIDE FOR DETAILS



**R & L Time Payment Plan**  
**NATIONAL BOND & INVESTMENT CO.**



# *The Holocaust*

<b>Victims</b>	<b>Killed</b>
<b>Jews</b>	<b>5.9 million</b>
<b>Soviet POWs</b>	<b>2-3 million</b>
<b>Ethnic Poles</b>	<b>1.8-2 million</b>
<b>Romani (Gypsies)</b>	<b>220,000-1,500,000</b>
<b>Disabled</b>	<b>200,000-250,000</b>
<b>Freemasons</b>	<b>80,000</b>
<b>Homosexuals</b>	<b>5,000-15,000</b>
<b>Jehovah's Witnesses</b>	<b>2,500-5,000</b>
<b>TOTAL</b>	<b>10.2 – 12.2 million</b>



# Building On The Ruins

## Marshall Plan

(European Recovery Program – ERP)

1947 – 1951

JCS 1779

"an orderly and prosperous Europe requires the economic contributions of a stable and productive Germany"

1945-1949 - \$12 billion

1949 – 1951 - \$13 billion

Beginning of Foreign Aid by US





# Building On The Ruins

Total Aid  
Millions \$

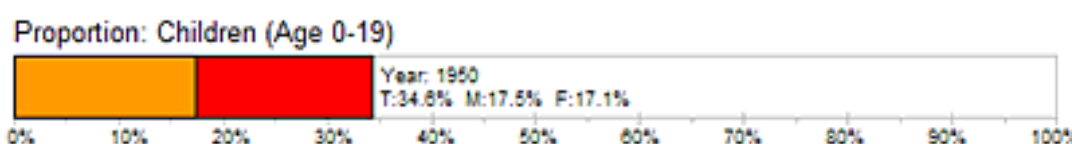
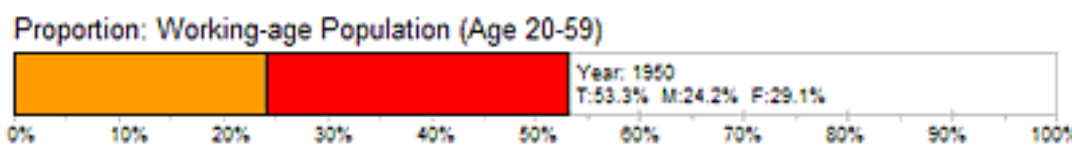
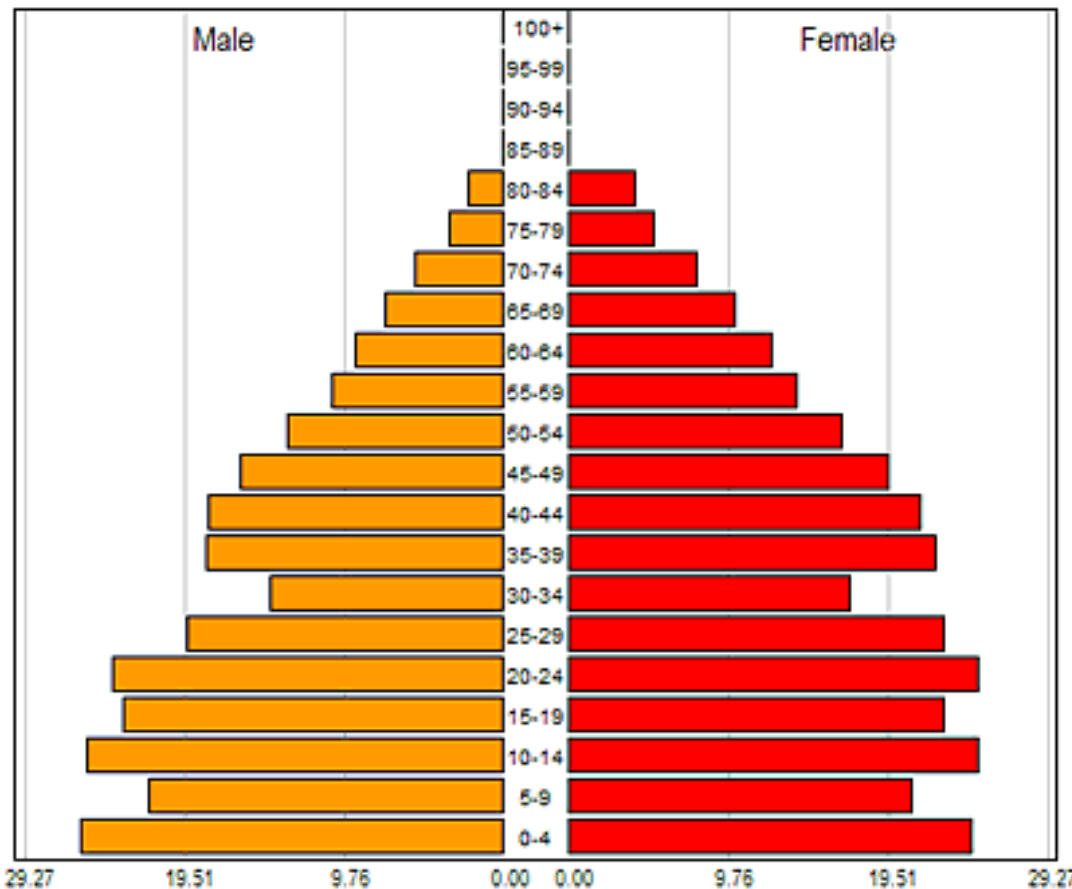


**April, 1948**  
—  
**June, 1952**

United Kingdom	3,189.8
France	2,713.6
Italy	1,508.8
Germany (West)	1,390.6
The Netherlands	1,083.5
Greece	706.7
Austria	677.8
Belgium/Luxembourg	559.3
Denmark	273.0
Norway	255.3
Turkey	225.1
Ireland	147.5
Sweden	107.3
Portugal	51.2
Iceland	29.3



# EUROPE: 1950

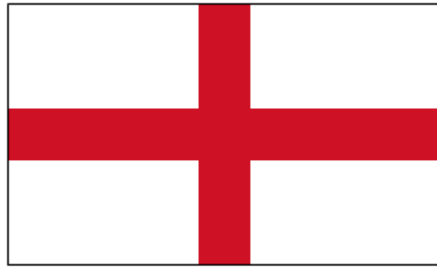


# Geography 301

## Europe

# Sociocultural Issues





**England**

+

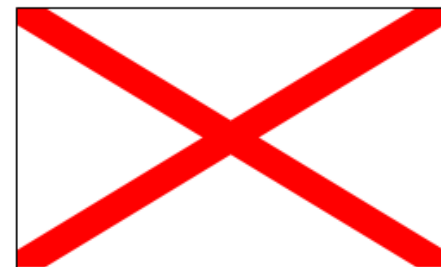


**Scotland**



**Original Union Flag  
(1606)**

+



**Ireland**



**Current Union Flag  
(1801)**





**YES**

**NO**

*Time to discuss  
the results of the Scottish election.*